

## SharePoint Connector for e-Signing Product

Project:  
SharePoint Connector for  
e-Signing Product

Business Industry:  
Information Technology

Duration:  
5 man months

Technology:  
Microsoft SharePoint  
Server 2010/2013

Associated Partner:  
IRIS Software Pvt. Ltd.  
([www.irissoftware.com](http://www.irissoftware.com))

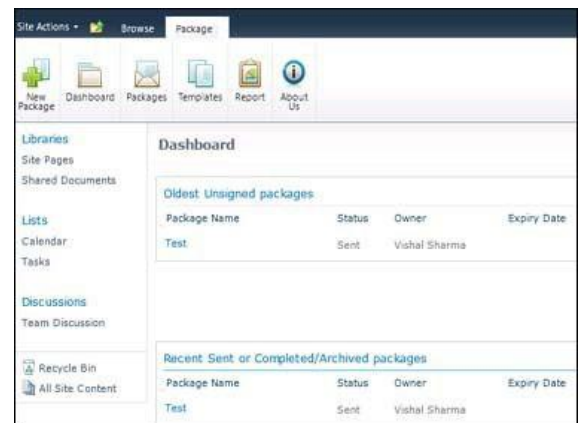
### Problem Background

The client is a provider of e-signing solutions to different industry domains. The client needed a Microsoft SharePoint connector for their e-signing solution. As many organizations are using Microsoft SharePoint as an enterprise platform for content management, document management, business process management, collaboration platform etc. they require to use the e-signing solution from within SharePoint so that a user need not go outside the SharePoint environment when e-signing documents. As a result the client decided to implement e-signing connector for Microsoft SharePoint.

### TechPerspect's Solution

TechPerspect created a SharePoint connector for the e-signing solution of the client. The connector helps a user to create packages and e-sign document(s) from within SharePoint. A user can also view the status of his/her created package from within the SharePoint environment. E-signed document includes embedded audit trails and tamper-evident signatures, and are automatically archived in Microsoft SharePoint for future reference with the following functions:

- Coordinating signatures from multiple people on a single document
- Keeping track of the entire e-sign process
- Detailed management reports for the different packages that need to be e-signed



## Solution Features

- Multiple signers and authentication methods
- Built in reminders and expiration dates
- Serial and parallel signing
- Multiple documents and authentication methods
- Online and in-person signing

## Business Impact

- Productivity gains as the users can create packages and get them signed from within Microsoft SharePoint
- Providing better user experience ensuring that contracts get signed in a timely manner
- Tracking of packages from within the same application.
- Intuitive UI and features merged within Microsoft SharePoint

## Client Speaks

"I really like e-signing documents from SharePoint itself. I can track the process and see detailed reports on the efficiency of the solution as well from within SharePoint"

### TECHPERSPECT SOFTWARE PVT. LTD.

Corporate Address: B – 14, Sector – 67,  
Noida, Uttar Pradesh, India  
[www.techperspect.com](http://www.techperspect.com)  
consult@techperspect.com  
+91-120-2484404/05/06